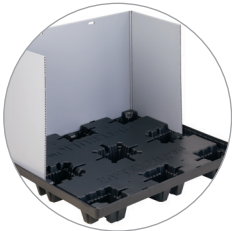


PRODUCT SHEET

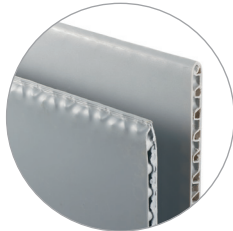
# NEW 28-POSITION OPTEBULK4845-27

The OpteBulk container is a sustainable alternative to paper gaylords for storage and distribution of raw material, assemblies and finished goods while offering transportation, packaging, and warehouse cost savings as a reusable collapsible container.

- Container includes reusable plastic pallet, sleeve and topcap
- Industry first 28 total container positions per 53' trailer
- Sleeve is manufactured from a tri-laminated structured core material with bi-directional strength
- Additional heights available to maximize outbound transportation – 35" and 52"
- One-person container assembly and collapse
- Clamshell collapse kits all components together for reverse logistics
- Access doors and 2-piece split-sleeves available for manual loading



Split-sleeve long side opening



Rounded vs. sharp-crimped top edge seal

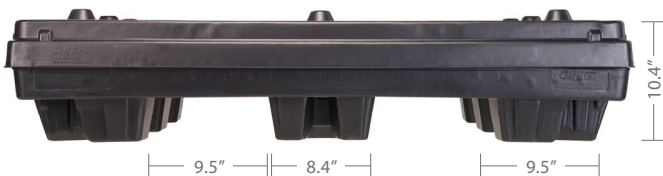


Active sleeve locks in both pallet and topcap

## PRODUCT DIMENSIONS

OPTEBULK 4845-27	Outside Dimensions (in)			Inside Dimensions (in)			Weight (lbs)	Internal Volume (cu. ft)	Access Door Openings				Truckload Quantity 53' Trailer			
									Height (in)		Width (in)		System		Individual	
	L	W	H	L	W	H			Long Side	Short Side	Long Side	Short Side	Assembled	Collapsed	Pallet / Topcap	Sleeve Only
	48.8	44.5	26.4	46.0	41.8	18.6			57.5	20.6	8.8	-	33.5	-	112	308

48" SIDE



45" SIDE

